

Silent changes at the bottom  
of the world...

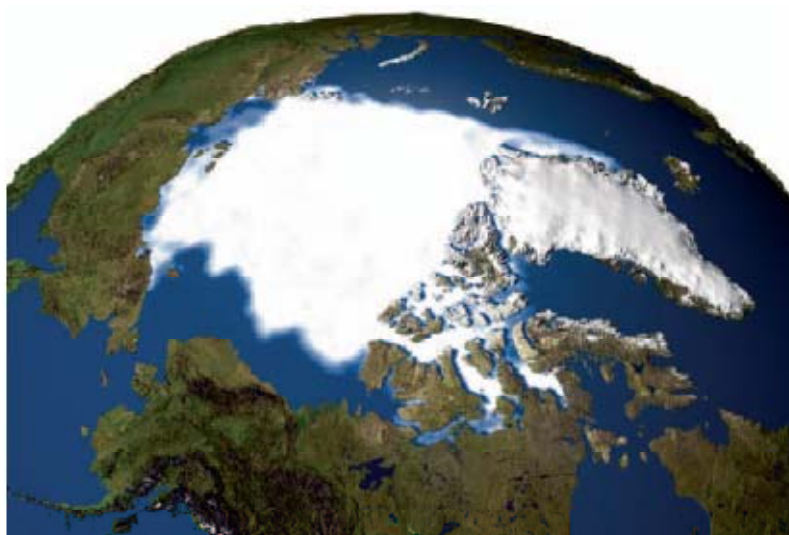




# Arctic sea ice

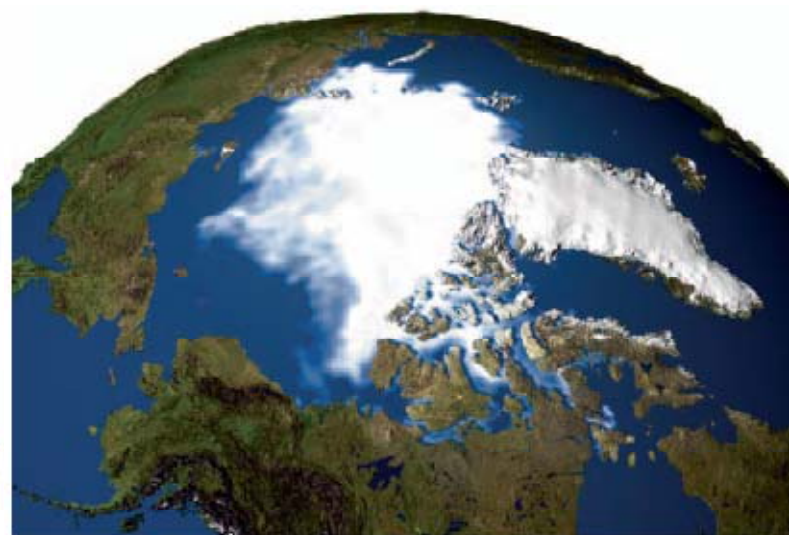
---

1979



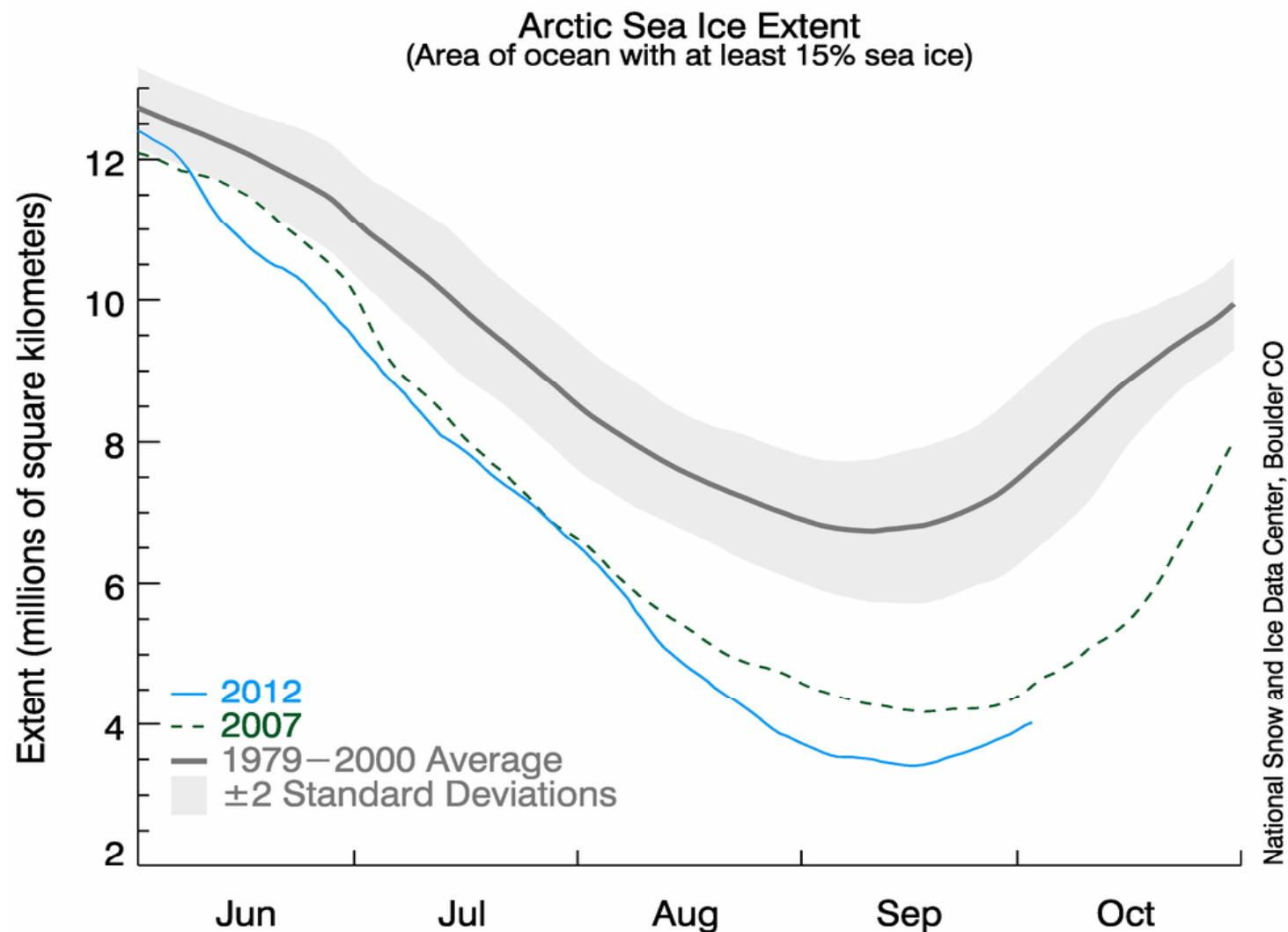
©NASA

2003



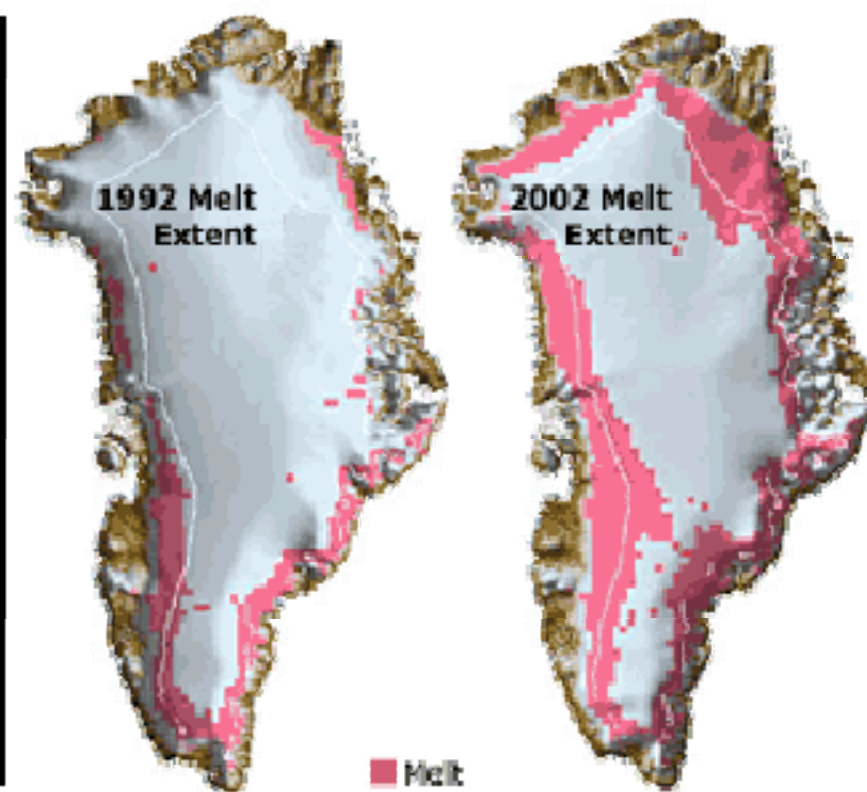
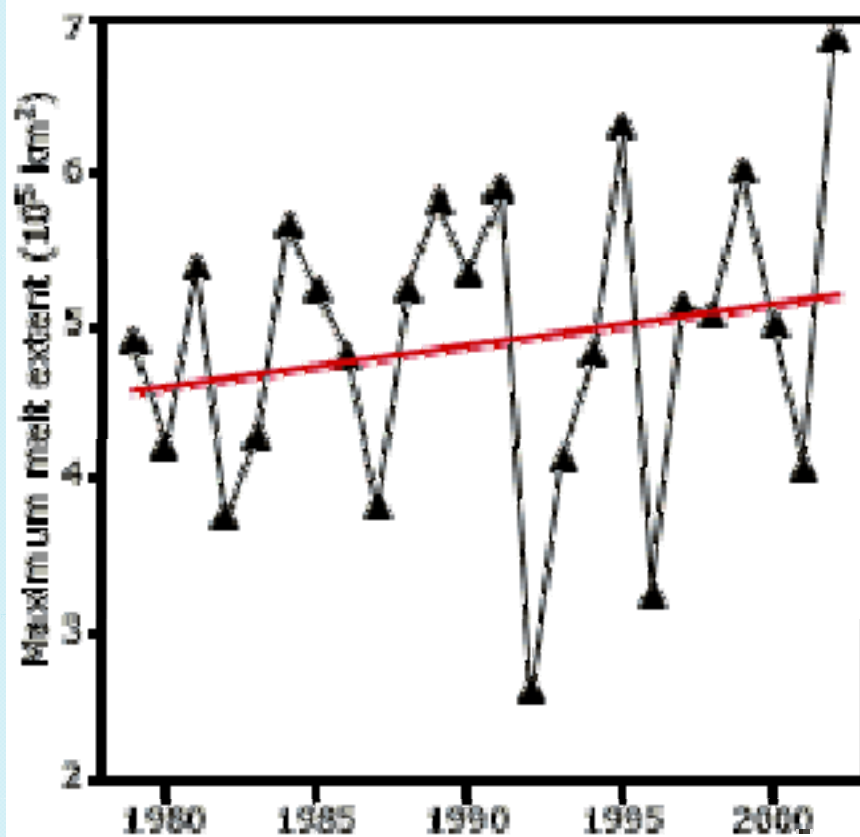


# Arctic sea ice



03 Oct 2012

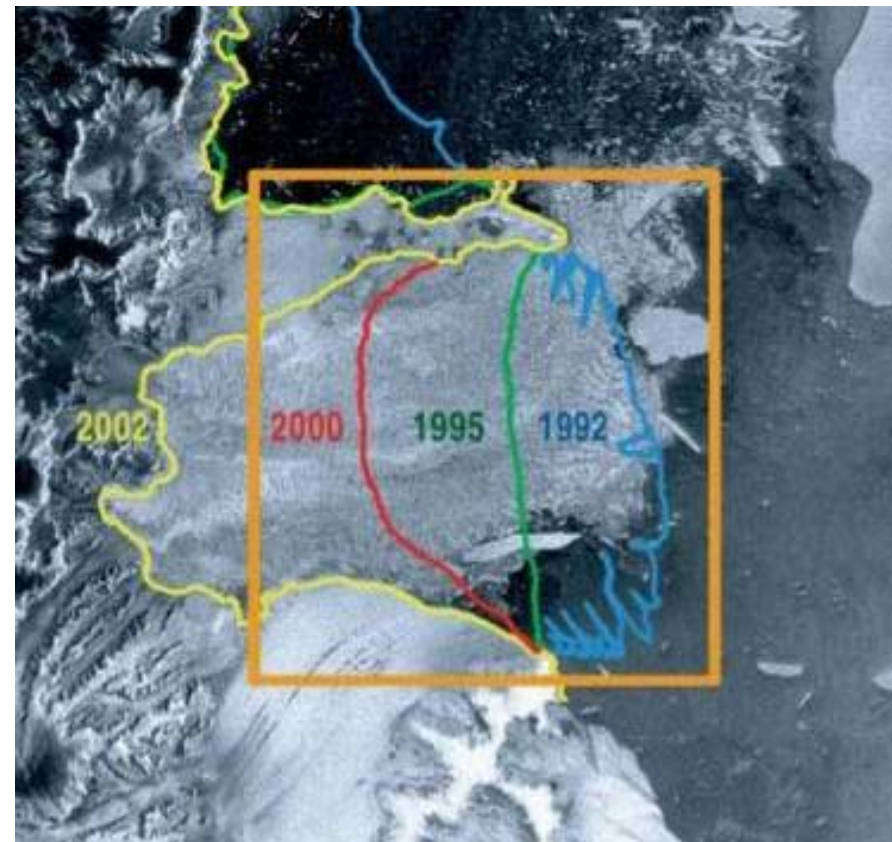
# The Greenland ice cap



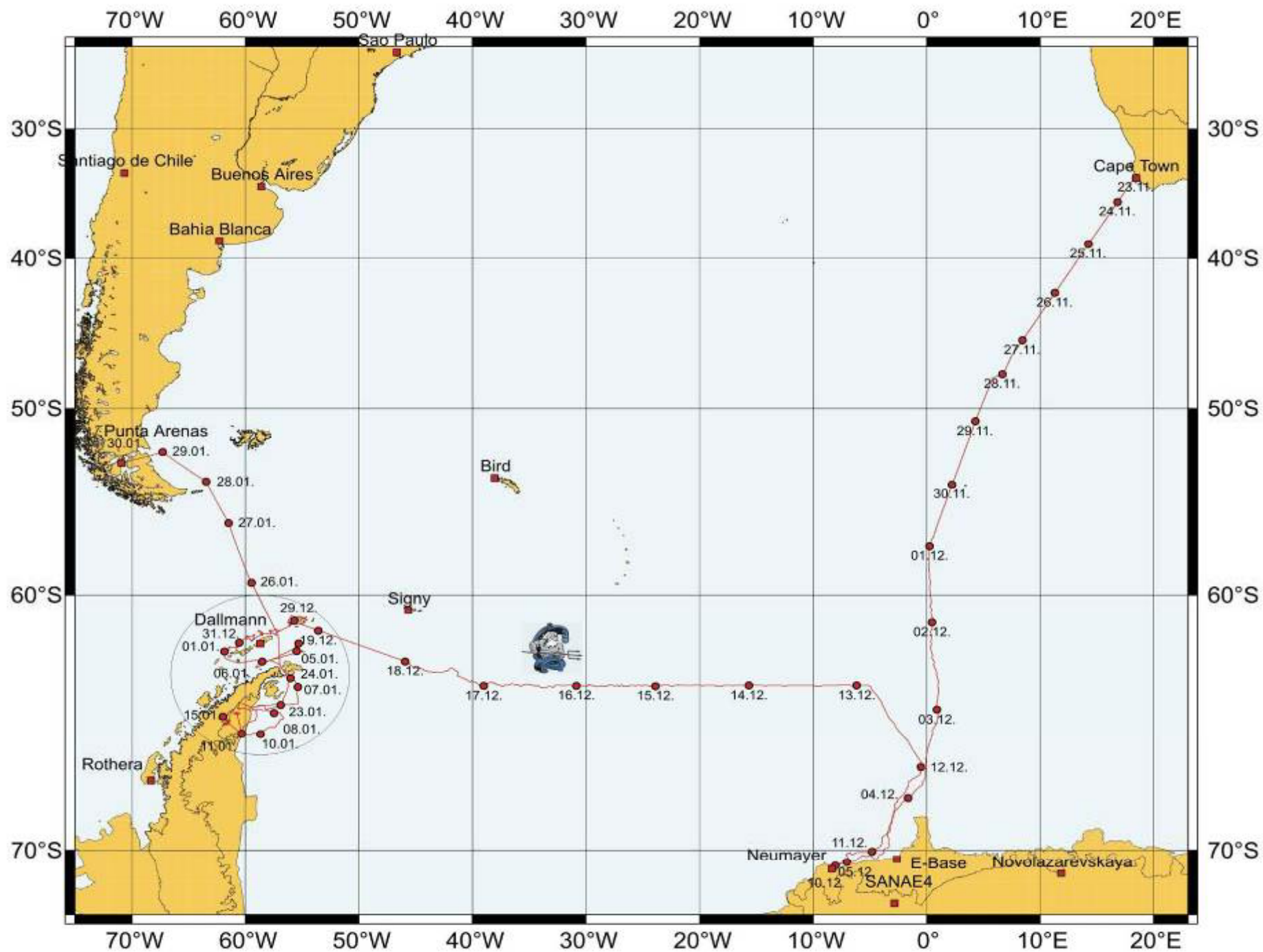


# Ice-shelves collapse in the Antarctic Peninsula

Since the disintegration of the ice-shelves, the glaciers feeding them have speeded up 8 times.













































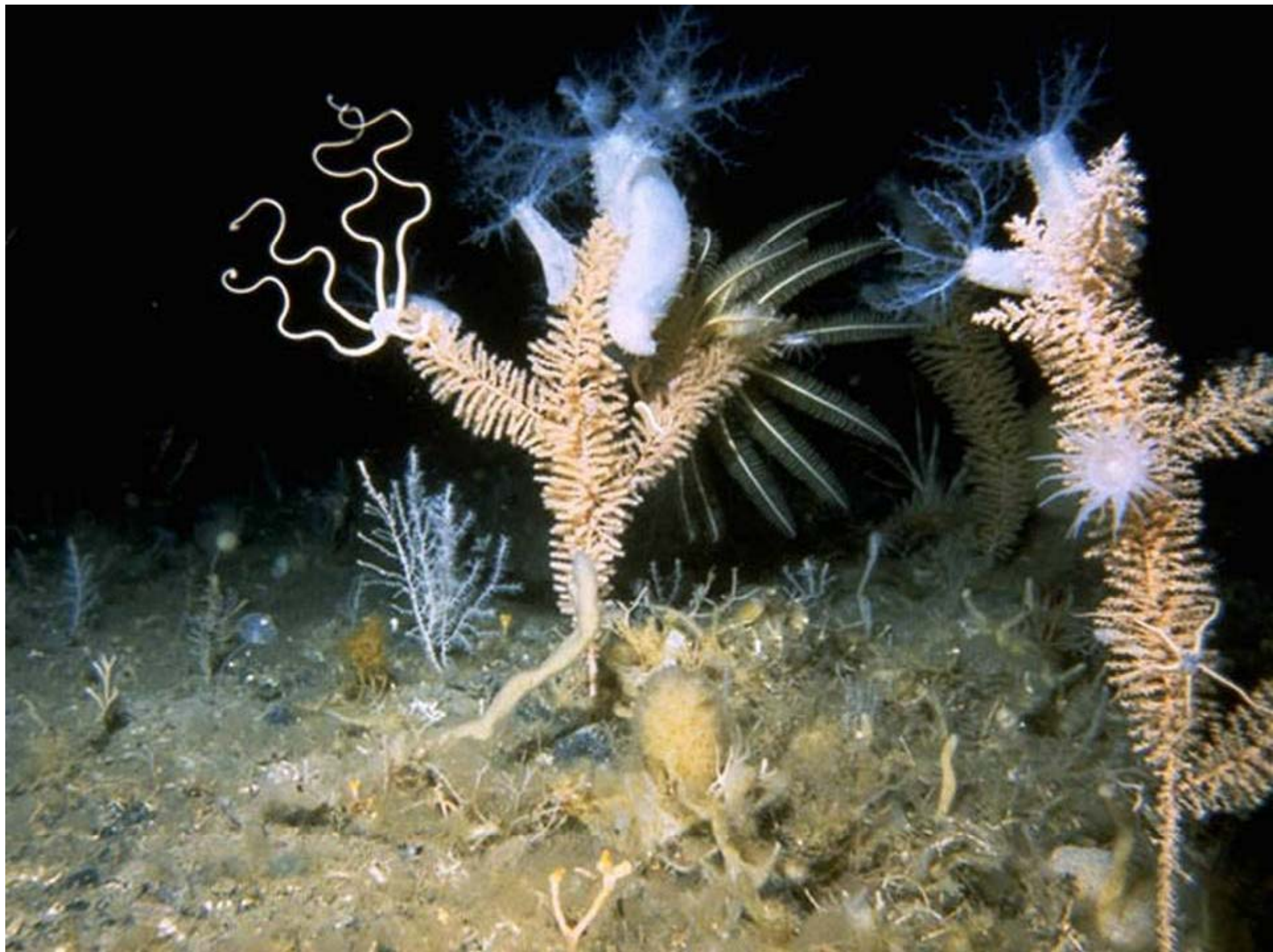






























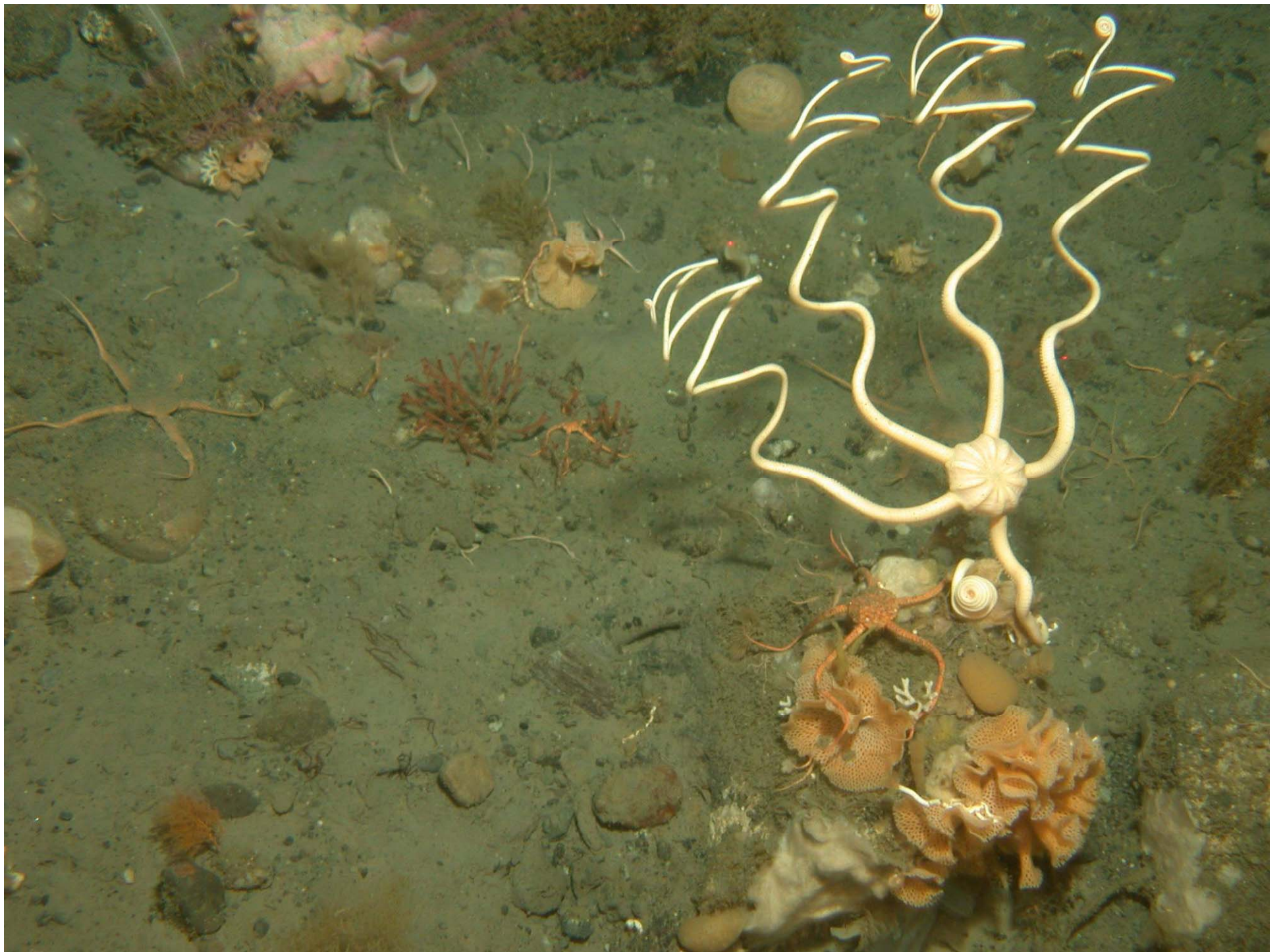






























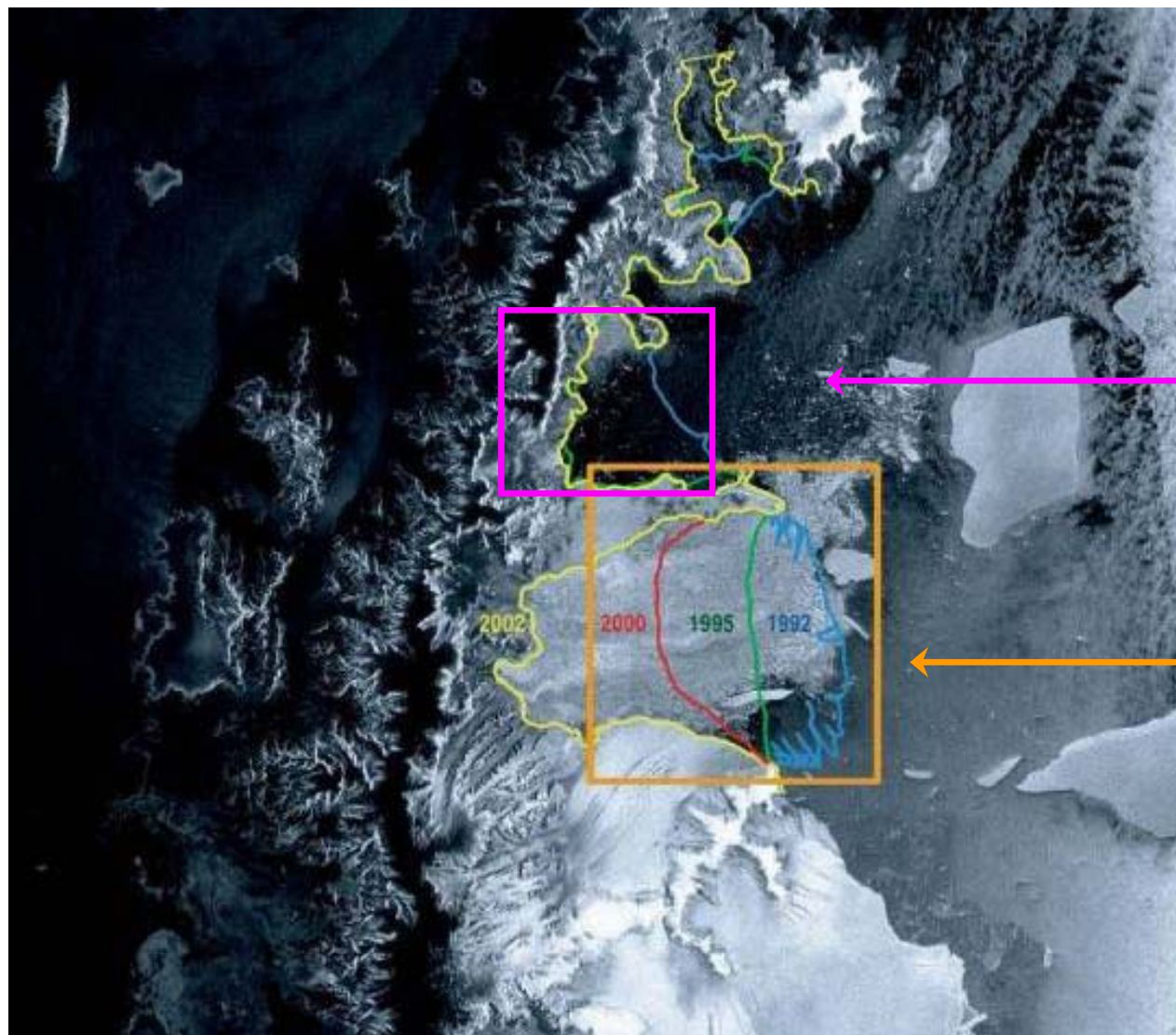
*Echiniphimedia hodgsoni* 4 cm  
ANT XXI/2 St. 265 290 m







# Larsen A and Larsen B



Larsen A

Larsen B















